

### Description of function:

In normal state (reset buttons in drawn position) is a connecting between VA and CA as well between VZ and CZ. When control the priority valve-OPEN-CLOSE over the CO2-input CO2-A or CO2-Z, the connection CO2-A is connected with CA and the connection CO2-Z is connected with CZ. The connections VA and VZ will be closed off. CO2 has always priority compared to the connections VA and VZ.

### Releasing:

Pneumatic releasing via applying the min. control pressure at connection CO2-A or CO2-Z

### Mounting:

- Connections:
  - CA ..... outlet OPEN
  - CZ ..... outlet CLOSE
  - VA ..... input OPEN
  - VZ .....input ZU
  - CO2-A .....priority connection OPEN
  - CO2-Z ..... priority connection CLOSE
- Variable mounting position. Make sure that the required place for the control slider is available.
- For our 1/8" connection threads we recommend to use screw connections with taper thread and to seal these in position using a liquid sealant (e.g. Loctite 243). It must be ensured that the liquid sealant is applied to the external thread.

### Commissioning:

- Deeply press both reset buttons in the correct position. In normal state the reset buttons stick out approx. 11mm of the housing.
- After releasing, repeat process.

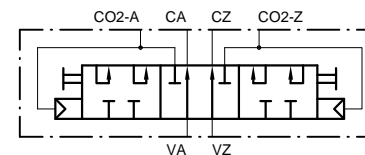
### Technical data:

max. operating pressure (connections CO2-A, CO2-Z, CA, CZ)	60bar
max. operating pressure (connections VA, VZ)	16bar
min. control pressure for CO2-connection	4bar
nominal width of valve	4mm
ambient temperature range	-25°C - +80°C (2h 110°C)
VdS approval no.	G590014

### Scope of supply:

Screw connections are NOT included in the scope of supply!

### Circuit diagramm:



Tolerance	Scale	1:1	Material	
Created Simetzberger	Sheet 1/2	Format A3	Title Priority-valve-OPEN-CLOSE VVAZ	Document Style Data sheet
Approved GH	Issue Date 09.12.2015			Document State Valid
Grasl Pneumatic Mechanik GmbH	QM FO 05.24.0			Document Number 04.006.DAT.00.03-E