

Diese Zeichnung ist Eigentum der
Fa. Grasl GmbH A-3454 Reidling, Europastra 1
Die Weiterverwendung oder Vervielflti-
gung ohne unser schriftliches Einver-
stndnis ist verboten!

Description of function:

The hand lever valve HH5/2 is a 5/2 way piston slide valve with mounted priority valve VVZ for manual controlling the RWA- or ventilation cylinder OPEN / CLOSE. The valve can be controlled electric CLOSE by an electro add-on component (EA). There is no manual operating possible as long as the add-on component isn't activated.

If there is a pressure on the connection CO2 which is higher than the min. release pressure, the priority valve VVZ switch, connect the input CO2 with the output CA and exhaust the connection CZ at the same time.
All ventilation operations are disable as long as the connection CO2 isn't exhausted and the priority valve will be reseted with the reset button.

Operation:

- Manual operation by using the hand lever.
hand lever up = OPEN
hand lever down = CLOSE
- Electric operation by dropping the rated voltage to the electromagnet of the add-on component.
- Pneumatic operation PRIORITY OPEN by applying the minimum release pressure on CO2.

Montage:

- Variable mounting position
- Join connections as follows:
P Compressed air
CA Pneumatic cylinder OPEN
CZ Pneumatic cylinder CLOSE
CO2 Pneumatic remote control: PRIORITY OPEN

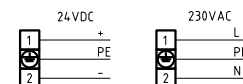
Technical data:

max. operating pressure	10bar
min. operating pressure by EA	2bar
min. release pressure by CO2	4bar
nominal width of valve	4mm
ambient tempaure range	-15°C - +55°C

Electro add-on components:

EA24 electric OPEN 24VDC
EA230 electric OPEN 230V

Connecting diagram electromagnet:

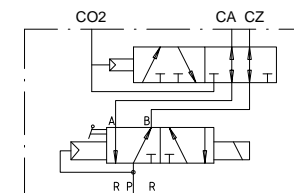


Power input - attracting - DC	-
Power input - attracting - AC	9 VA
Power input - holding - DC	5W
Power input - holding - AC	6VA

Ordering example:

HH5/2 - VVZ - EA230 - LFZ

Pneumatic symbol:



GRASL Pneumatic-Mechanik GmbH A-3454 Reidling Europastra 1				Freimatoleranz nach DIN 7168:		Mastab: 1:1		Werkstoff:	
						ID - Nr.:			
				Datum		Name		Bezeichnung:	
				Bear.		31.08.2009		Simetzberger	
				Gepr.		29.05.2012		KW	
				Norm					
				Type:		HH 5/2 - VVZ		Zeichnung Nr.:	
02				VdS Anerkenn., Temp.		21.05.2012		SA	
01				Text		14.02.2011		SA	
Zus.				nderung		Datum		Name	
				(Urspr.)		(Ers.f.)		04.007.DAT.08.01	
								(Ers.d.)	
								fachlich geprft am	
								29.5.2002 KW	

Data sheet

Hand lever valve HH 5/2 - VVZ
with electro add-on component OPEN/air spring CLOSE

Zeichnung Nr.: 04.007.DAT.08.02-E

Blatt

BL.