

Diese Zeichnung ist Eigentum der
Fa. Grasl GmbH A-3454 Reidling, Europastra 1
Die Weiterverwendung oder Vervielflti-
gung ohne unser schriftliches Einver-
stndnis ist verboten!

Description of function:

The hand lever valve HH5/2 is a 5/2 way piston slide valve with mounted priority valve VVZ for manual controlling the RWA- or ventilation cylinder OPEN / CLOSE. The valve can be controlled pneumatic OPEN / CLOSE by pneumatic add-on components (PA / PZ), whereby a add-on component can have optionally also priority over the other (PAV / PZV). There is no manual operating possible as long as a add-on component is activated.

If there is a pressure on the connection CO2 which is higher than the min. release pressure, the priority valve VVZ switch, connect the input CO2 with the output CA and exhaust the connection CZ at the same time. All ventilation operations are disable as long as the connection CO2 isn't exhausted and the priority valve will be reseted with the reset button.

Operation:

- Manual operation by using the hand lever.
hand lever up = OPEN
hand lever down = CLOSE
- Pneumatic operation by applying the min. release pressure on PA(PAV) / PZ(PZV).
- Pneumatic operation PRIORITY OPEN by applying the minimum release pressure on CO2.

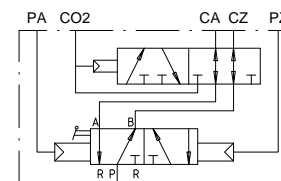
Installation:

- Variable mounting position
- Join connections as follows:
P Compressed air
CA Pneumatic cylinder OPEN
CZ Pneumatic cylinder CLOSE
PA / PAV Pneumatic remote control: VENTILATION OPEN
PZ / PZV Pneumatic remote control: VENTILATION CLOSE
CO2 Pneumatic remote control: PRIORITY OPEN

Technical data:

max. operating pressure	16bar
min. release pressure by PA/PZ	3bar
min. release pressure by PAV/PZV	2bar
min. release pressure by CO2	4bar
nominal width of valve	4mm
ambient temperature range	-15°C - +55°C

Pneumatic symbol:



Ordering example:

HH5/2 - VVZ - PA - PZ

GRASL Pneumatic-Mechanik GmbH A-3454 Reidling Europastraße 1				Freimaßtoleranz nach DIN 7168:		Maßstab: 1:1		Werkstoff:	
						ID - Nr.:			
					Datum	Name		Bezeichnung: Data sheet Hand lever valve HH 5/2 - VVZ with pneumatic add-on component OPEN/CLOSE	
				Bear.	31.08.2009	Simetzberger			
				Gepr.	29.05.2012	KW			
				Norm					
				Type:		Zeichnung Nr.:			Blatt
02	VdS Anerkenn., Temp.	21.05.2012	SA	HH 5/2 - VVZ		04.007.DAT.09.02-E			BL.
01	Text	14.02.2011	SA						
Zus.	Änderung	Datum	Name	(Urspr.)		(Ers.f.)		04.007.DAT.09.01	(Ers.d.)